

# CHIPPING HAMMERS

## Safety, Operating, Maintenance Instructions & Spare Parts List



**MCH-2RD  
MCH-2HX**



**MCH-3S RD  
MCH-3S HX**



**MCH-3RD  
MCH-3HX**



**MCH-4S RD  
MCH-4S HX**



**MCH-4RD  
MCH-4HX**



**MCH-2RD/RD  
MCH-2HX/RD**



**MCH-3RD/RD  
MCH-3HX/RD**



**MCH-4RD/RD  
MCH-4HX/RD**



**MCH-2HX/BALL**



**MCH-3RD/BALL  
MCH-3HX/BALL**



**MCH-4RD/BALL  
MCH-4HX/BALL**





**CONTENTS**

Safety Instructions.....	
General Instructions.....	4
Prior To Start Up.....	4
Utilization.....	4
	5
Operation / maintenance.....	6
Procedure For Ordering Parts.....	7
Design Specifications & Marking Details .....	8
Chisel Selection Detail Chart .....	9
Spare Parts list.....	12
MCH-2.....	12
MCH-3.....	14
MCH-4.....	16
MCH-3S.....	18
MCH-4S.....	20
MCH-2/RD.....	22
MCH-3/RD.....	24
MCH-4/RD.....	26
MCH-2/BALL.....	28
MCH-3/BALL.....	30
MCH-4/BALL.....	32
Warranty Policy.....	34

## **SAFETY INSTRUCTIONS**

### **GENERAL INSTRUCTIONS**

- Prior to using these tools, become familiar with any local regulations. It is essential to carry out any specific safety instructions concerning the site or place of operation.
- Make sure that only persons authorized to use compressed air equipment have access to the work area. Only trained persons over 18 years of age are authorized to use these tools.
- Always wear protective clothing and equipment (PPE) against:
  - Atmospheric exposure: appropriate, resistant, waterproof clothing. Never wear baggy clothes, rings or chains, which could become caught in moving parts or tools.
  - Heat or cold, tool vibrations: gloves.
  - Noise: hearing protectors.
  - Shocks: Helmet, safety shoes with non-slip soles.
  - Projectile risks: safety glasses, face guard.
  - Pollution: facemask.
- Never service these tools using dangerous products: gas/oil (diesel) petrol (gasoline) or any volatile ingredients. (explosion risk).
- Keep these tools clean, especially handles.
- Follow OSHA standards and/or any applicable Federal, State or Local codes and regulations where they apply.

### **PRIOR TO START UP**

- Check that the tool is in good condition: no cracks, fissures or scaling.
- Make sure all bolts are undamaged and correctly tightened and that safety devices fitted to the equipment are in position and function correctly.
- Check for sleeve, shank and collar wear, which if too high could cause the ejection of the steel (bit) or other machine parts.
- Make sure that the clamp or mechanism retaining the steel (bit) is in good condition.
- Only use steel (bit) in accordance with manufacturer's specifications.
- Check steel (bit) sharpness, shank condition and wear. Check steel (bit) grinding and steel (bit) clearances and that the blowhole is in good condition for drilling hammers.
- Check the air hose, which must not be cracked or have any deep abrasions and make sure all gaskets are in place and in good condition.
- Make air hose connections safe from accidental disconnection by using appropriate safety clips.

**UTILIZATION**

- Only use the sleeve (couplings) specifically recommended for connecting these tools to the supply air hose (except for tools with rotating connections).
- Never pressurize an air hose (except during controlled venting) when not connected to the tool.
- Use only a constant compressed air supply for the equipment and do not exceed the maximum rated pressure, 7 bar or 100 psi.
- Do not use these tools for purposes for which they were not designed.
- Never use these tools without a steel (bit) or without the steel (bit) being completely inserted and latched **or retained** properly.
- Before any work, make sure that the steel (bit) cannot come in contact with any ducting or container transporting or containing fluids or electrical, telephone or other cables.
- Never point these tools or compressed air hose towards people or animals.
- To avoid any risk of sudden pressurization (air hose whipping risk)
- The compressor air valve should be opened progressively.
- Prior to start up, operator should be in a stable position and holding the tool firmly with two hands without pressing on the trigger or throttle.
- Start up the tool progressively to avoid any unexpected toolsteel (bit) movements on the working surface.
- Make a tapping hole of a few cm / in. before drilling with full power.
- Never hold the tool by the clamp (hose).
- Orient the exhaust orifices to avoid any dangerous projections.
- Never manipulate the steel (bit) without gloves, because of the burn danger.
- Never let the steel (bit) rest on a foot.
- Never allow the tool to lean on its trigger, to avoid uncontrolled start-ups.
- Never leave the tool unprotected on the ground in dirt or mud.
- Never use the air hose to move these tools.
- Stop the tool before moving it.
- After every shutdown, check all connections before re-pressurizing the air hose and tool operating system.
- Never disconnect a pressurized air hose without having shut off the air supply service valve. Wait until system has vented or make sure it has vented by running the tool until all pressure has been released.
- When not in use, disconnect the tool to avoid accidental restarting. Store the air tools under cover and out of reach of children.

## OPERATION/MAINTENANCE

### RECOMMENDATION

- Before starting the tool make sure you comply with the safety instructions give in the safety section above.
- Required output: Prior to start-up make sure that the compressor output is adequate for supplying all connected air tools simultaneously at the recommended pressure.
- Important: A very long air hose, quick release couplings and connections can cause pressure drops resulting in a reduced compressed air pressure. Use connections having a maximum internal diameter, to reduce pressure losses.
- Vent (to clean) supply lines by using a progressive air blast (slowly opening tap/service valve) and make sure any impurities cannot penetrate into the tool when connecting up.
- Operating pressure: Must not exceed **7 bar or 100 psi**. It must be checked as close as possible to the tool and while it is operating normally.
- Use correctly ground steel (bit) in good condition.
- Do not use excessive force when mounting, bearing down on, tools to avoid “imbedding” the steel (bit). When running, it must be possible to see dust discharging along the whole length of the steel (bit).
- **Lubrication:** Paving breakers, Chipping hammers and other demolition tools do not require any line lubrication under normal service conditions. The residual oil content in the compressed air usually provides sufficient lubrication. However, under certain conditions (compressed air cooled by an after cooler, or a very long supply line air hose or manifold) a very light oil can be used. Lubrication is achieved by injecting 0.5 oz (15mL) of oil into the equipment, via the sleeve fitting/air inlet (or use an inline oiler, set to lowest position); this operation should be carried out at the end of the working day, and prior to each extended stoppage or storage.
- **Lubrication:** Drilling hammers are fitted with an oil reservoir, which should be filled up with a bodied oil (e.g. EP 140 or SAE 90 Wt.) oil before each drilling operation. Top end lubrication is same as above. When operating, monitor that the steel (bit) shank is correctly greased.
- **Storage:** After lubrication, store the tool vertically with the retainer at the bottom in a sheltered place.
- **Operation problems:** If the piston gums up, only lubricate with the oil recommended.
- Never attempt to modify or repair any tool yourself, call in an authorized Sullair Sales Service Dealer, and only use original Sullair accessories and parts.

**Sullair reserves the right to modify products and specifications without prior notice.**

## **PROCEDURE FOR ORDERING PARTS**

You should order parts from the nearest authorized Sullair representative or the representative from whom the pneumatic tool was purchased. If for any reason you cannot obtain parts in this manner, contact the factory directly at the address, phone number, or website listed below.

Sullair North American Operations  
3700 East Michigan Boulevard  
Michigan City, IN 46360 USA  
[www.sullair.com](http://www.sullair.com)  
1-800-SULLAIR (USA only)  
1-219-879-5451 (non-USA)

When ordering parts, always indicate the model and serial number of the tool. You can get the serial number from the Bill of Lading for the tool, from the Serial Number Plate located on the tool (see page # 8: serial number plate location) and when applicable on the barrel of the tool.

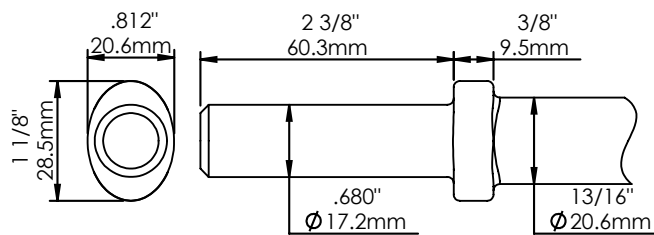
The genuine Sullair service parts listed meet or exceed the demands of this pneumatic tool. Use of replacement parts other than those approved by Sullair will void the Sullair warranties specific to this product and may lead to hazardous conditions over which Sullair has no control. Such conditions include, but are not limited to, bodily injury and tool failure.





# CHIPPING HAMMER-CHISEL SELECTION DETAIL CHART

## 0.680 ROUND / OVAL COLLAR

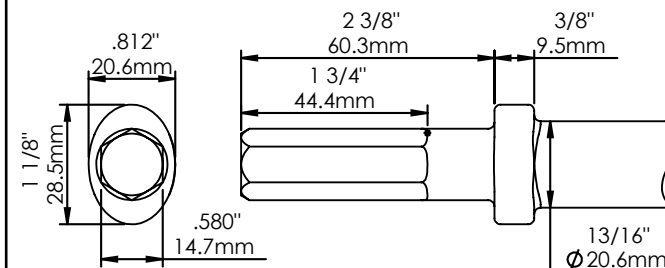


SUITABLE FOR USE WITH  
CHIPPING HAMMERS  
INCORPORATING,  
A) OVAL COLLAR  
RETAINER (68722235) WITH  
ROUND BUSHING (68723240)  
OR  
B) BALL TYPE RETAINER-SCREW  
STYLE (68780341) WITH  
ROUND BUSHING (68723240)  
OR  
C) BALL TYPE RETAINER-TAPERED  
(250021-222) WITH ROUND  
BUSHING (68723240)

USE THESE CHISELS WITH,

- 1) MCH-2RD (68252240-001)
- 2) MCH-3RD (68252241-001)
- 3) MCH-4RD (68252242-001)
- 4) MCH-3S RD (68252247-004)
- 5) MCH-4S RD (68252248-004)
- 6) MCH-3RD/BALL (68252241-004)
- 7) MCH-4RD/BALL (68252242-004)

## 0.580 HEX / OVAL COLLAR

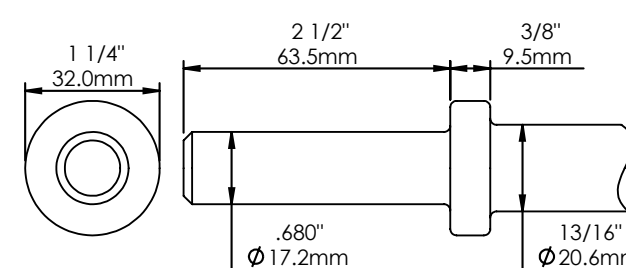


SUITABLE FOR USE WITH  
CHIPPING HAMMERS  
INCORPORATING,  
A) OVAL COLLAR  
RETAINER (68722235) WITH  
HEX BUSHING (68722759)  
OR  
B) BALL TYPE RETAINER-SCREW  
STYLE (68780341) WITH  
HEX BUSHING (68722759)  
OR  
C) BALL TYPE RETAINER-TAPERED  
(250021-222) WITH HEX  
BUSHING (68722759)

USE THESE CHISELS WITH,

- 1) MCH-2HX (68252243-001)
- 2) MCH-3HX (68252244-001)
- 3) MCH-4HX (68252245-001)
- 4) MCH-3S HX (68252250-004)
- 5) MCH-4S HX (68252251-004)
- 6) MCH-2HX/BALL (68252243-004)
- 7) MCH-3HX/BALL (68252244-004)
- 8) MCH-4HX/BALL (68252245-004)

## 0.680 ROUND / ROUND COLLAR

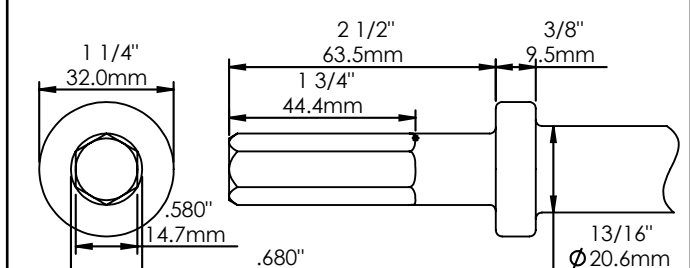


SUITABLE FOR USE WITH  
CHIPPING HAMMERS  
INCORPORATING,  
A) ROUND COLLAR  
RETAINER (250012-526) WITH  
ROUND BUSHING (68723240)  
OR  
B) BALL TYPE RETAINER-SCREW  
STYLE (68780341) WITH  
ROUND BUSHING (68723240)  
OR  
C) BALL TYPE RETAINER-TAPERED  
(250021-222) WITH ROUND  
BUSHING (68723240)

USE THESE CHISELS WITH,

- 1) MCH-3S RD (68252247-004)
- 2) MCH-4S RD (68252248-004)
- 3) MCH-2RD/RD (68252240-002)
- 4) MCH-3RD/RD (68252241-002)
- 5) MCH-4RD/RD (68252242-002)
- 6) MCH-3RD/BALL (68252241-004)
- 7) MCH-4RD/BALL (68252242-004)

## 0.580 HEX / ROUND COLLAR



SUITABLE FOR USE WITH  
CHIPPING HAMMERS  
INCORPORATING,  
A) ROUND COLLAR  
RETAINER (250012-526) WITH  
HEX BUSHING (68722759)  
OR  
B) BALL TYPE RETAINER-SCREW  
STYLE (68780341) WITH  
HEX BUSHING (68722759)  
OR  
C) BALL TYPE RETAINER-TAPERED  
(250021-222) WITH HEX  
BUSHING (68722759)

USE THESE CHISELS WITH,

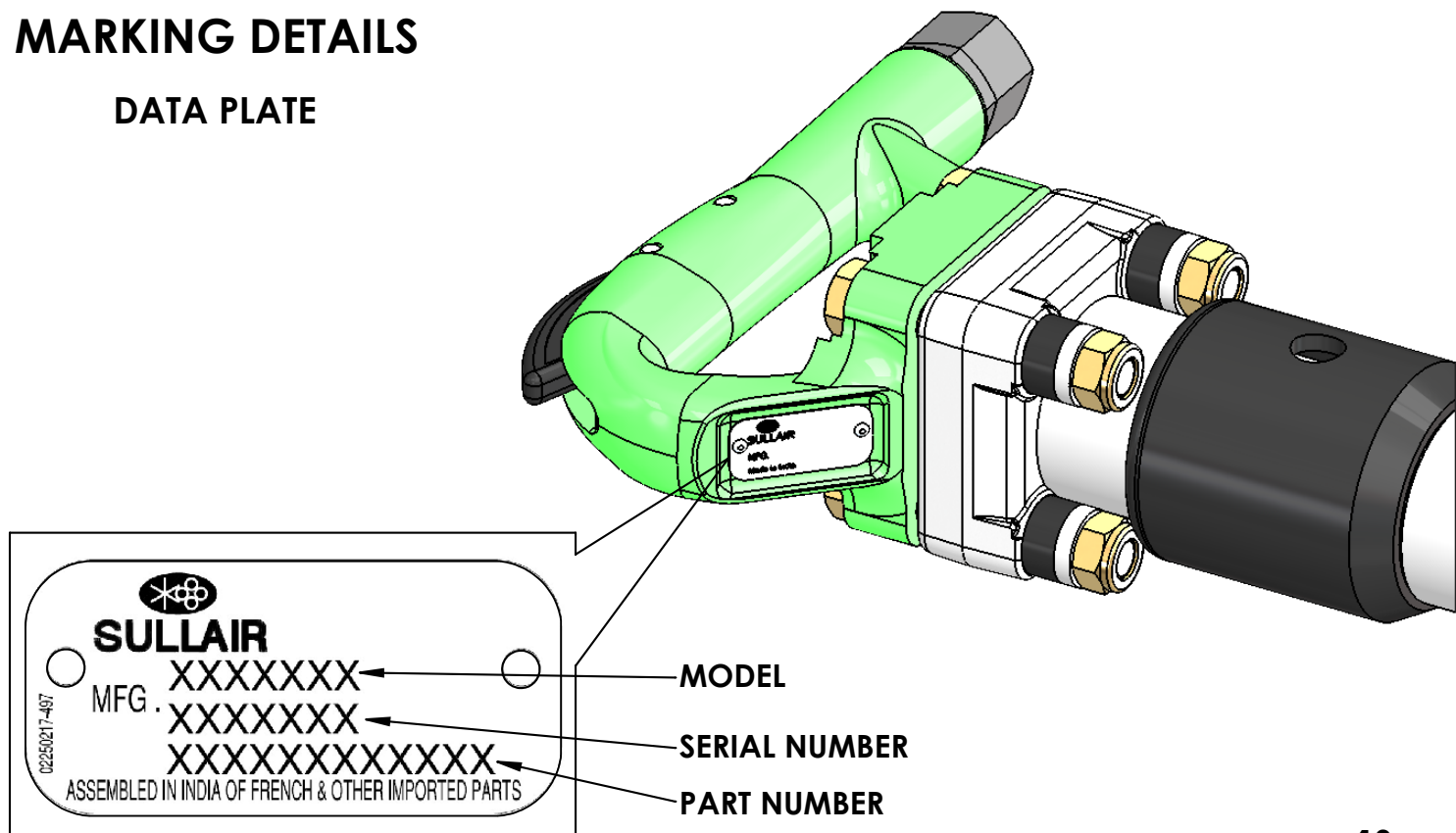
- 1) MCH-3S HX (68252250-004)
- 2) MCH-4S HX (68252251-004)
- 3) MCH-2HX/RD (68252243-002)
- 4) MCH-3HX/RD (68252244-002)
- 5) MCH-4HX/RD (68252245-002)
- 6) MCH-2HX/BALL (68252243-004)
- 7) MCH-3HX/BALL (68252244-004)
- 8) MCH-4HX/BALL (68252245-004)

## CHIPPING HAMMER DESIGN SPECIFICATIONS

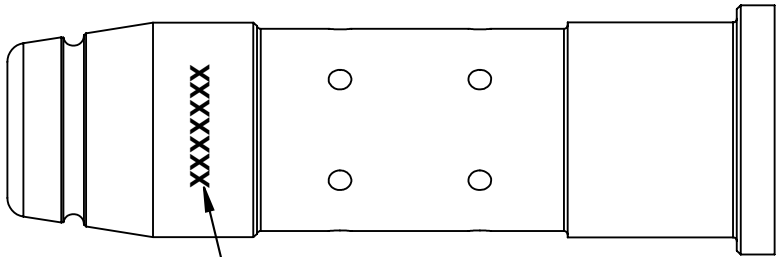
Model	Tool No.	Weight		Length		Bore & Stroke	Impact Rate	Air Consumption		Air Inlet Diameter	Chuck Size
		lbs	Kg	in	Cm	in	B P M	CFM	m <sup>3</sup> /min	in	
MCH-2RD	68252240-001	17.49	7.95	14	35.56	1 1/8 x 3	3600	34	0.96	3/8" NPT or 7/8"-24	0.680 round
MCH-2HX	68252243-001										0.580 hex
MCH-3RD	68252241-001	18.92	8.60	15 1/4	38.74	1 1/8 x 3 3/4	2280	33	0.93	3/8" NPT or 7/8"-24	0.680 round
MCH-3HX	68252244-001										0.580 hex
MCH-4RD	68252242-001	19.56	8.89	16 1/2	41.91	1 1/8 x 4 1/4	1800	30	0.84	3/8" NPT or 7/8"-24	0.680 round
MCH-4HX	68252245-001										0.580 hex
MCH-3S RD	68252247-004	19.78	8.97	17	43.18	1 1/8 x 3 3/4	2280	33	0.93	3/8" NPT or 7/8"-24	0.680 round
MCH-3S HX	68252250-004										0.580 hex
MCH-4S RD	68252248-004	20.90	9.48	18	45.72	1 1/8 x 4 1/4	1800	30	0.84	3/8" NPT or 7/8"-24	0.680 round
MCH-4S HX	68252251-004										0.580 hex
MCH-2RD/RD	68252240-002	17.49	7.95	14	35.56	1 1/8 x 3	3600	34	0.96	3/8" NPT or 7/8"-24	0.680 round
MCH-2HX/RD	68252243-002										0.580 hex
MCH-3RD/RD	68252241-002	18.92	8.60	15 1/4	38.74	1 1/8 x 3 3/4	2280	33	0.93	3/8" NPT or 7/8"-24	0.680 round
MCH-3HX/RD	68252244-002										0.580 hex
MCH-4RD/RD	68252242-002	19.56	8.89	16 1/2	41.91	1 1/8 x 4 1/4	1800	30	0.84	3/8" NPT or 7/8"-24	0.680 round
MCH-4HX/RD	68252245-002										0.580 hex
MCH-2HX/BALL	68252243-004	17.31	7.85	13 1/2	34.26	1 1/8 x 3	3600	34	0.96	3/8" NPT or 7/8"-24	0.580 hex
MCH-3RD/BALL	68252241-004	19.75	8.96	15 1/4	38.74	1 1/8 x 3 3/4	2280	33	0.93	3/8" NPT or 7/8"-24	0.680 round
MCH-3HX/BALL	68252244-004										0.580 hex
MCH-4RD/BALL	68252242-004	20.83	9.45	16 1/2	41.91	1 1/8 x 4 1/4	1800	30	0.84	3/8" NPT or 7/8"-24	0.680 round
MCH-4HX/BALL	68252245-004										0.580 hex

## MARKING DETAILS

### DATA PLATE

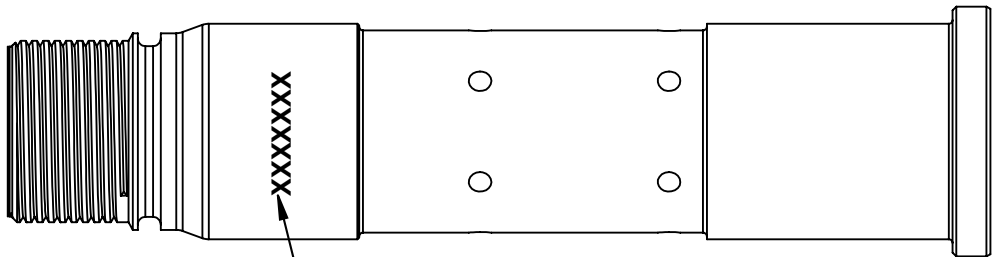


**CYLINDER**



**68722310(CYLINDER-2")**  
**68722233(CYLINDER-3")**  
**68722307(CYLINDER-4")**

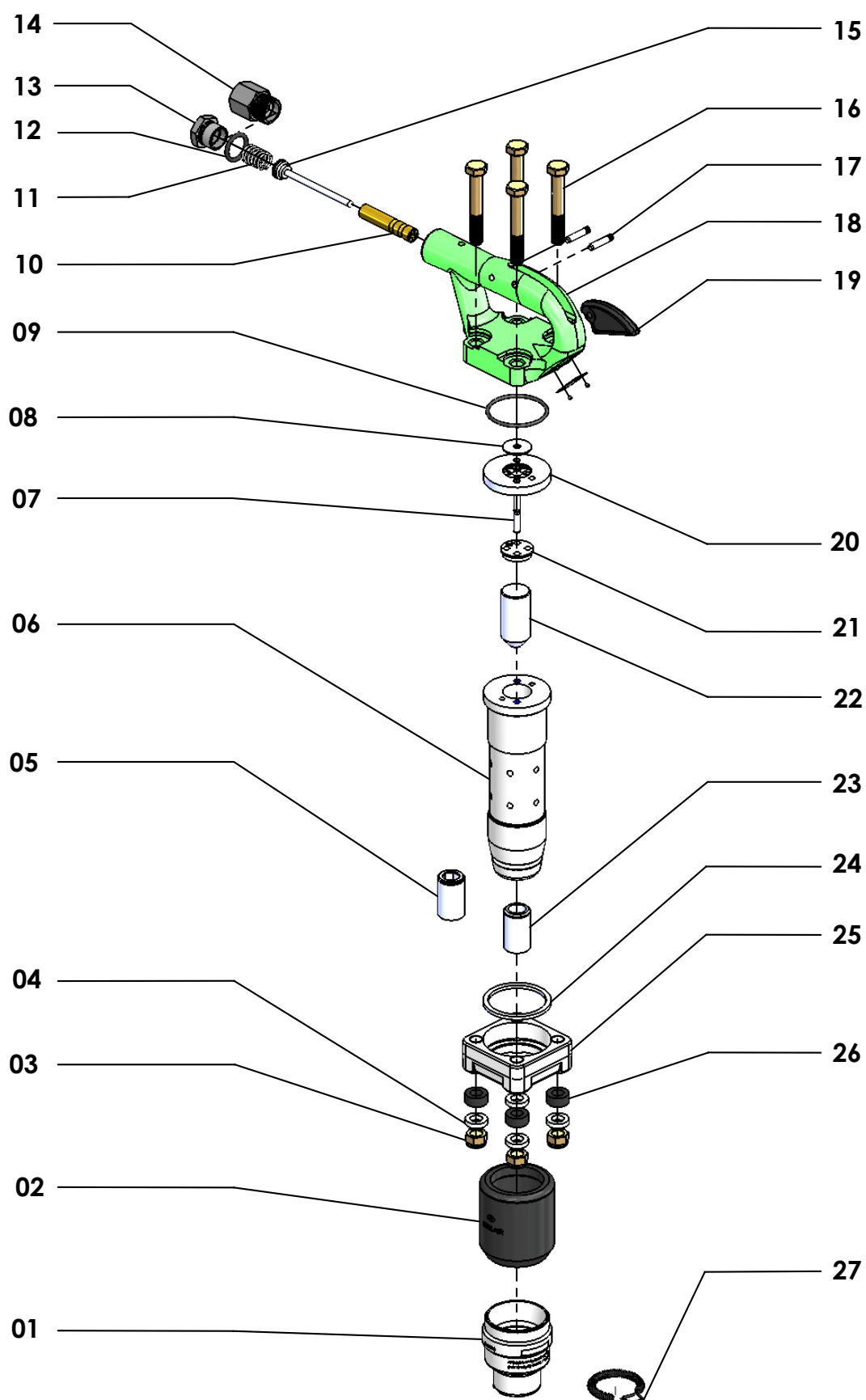
**SERIAL NUMBER LOCATION**



**68723232**  
**(CYLINDER-3"**  
**SCREW STYLE)**  
**68723233**  
**(CYLINDER-4"**  
**SCREW STYLE)**

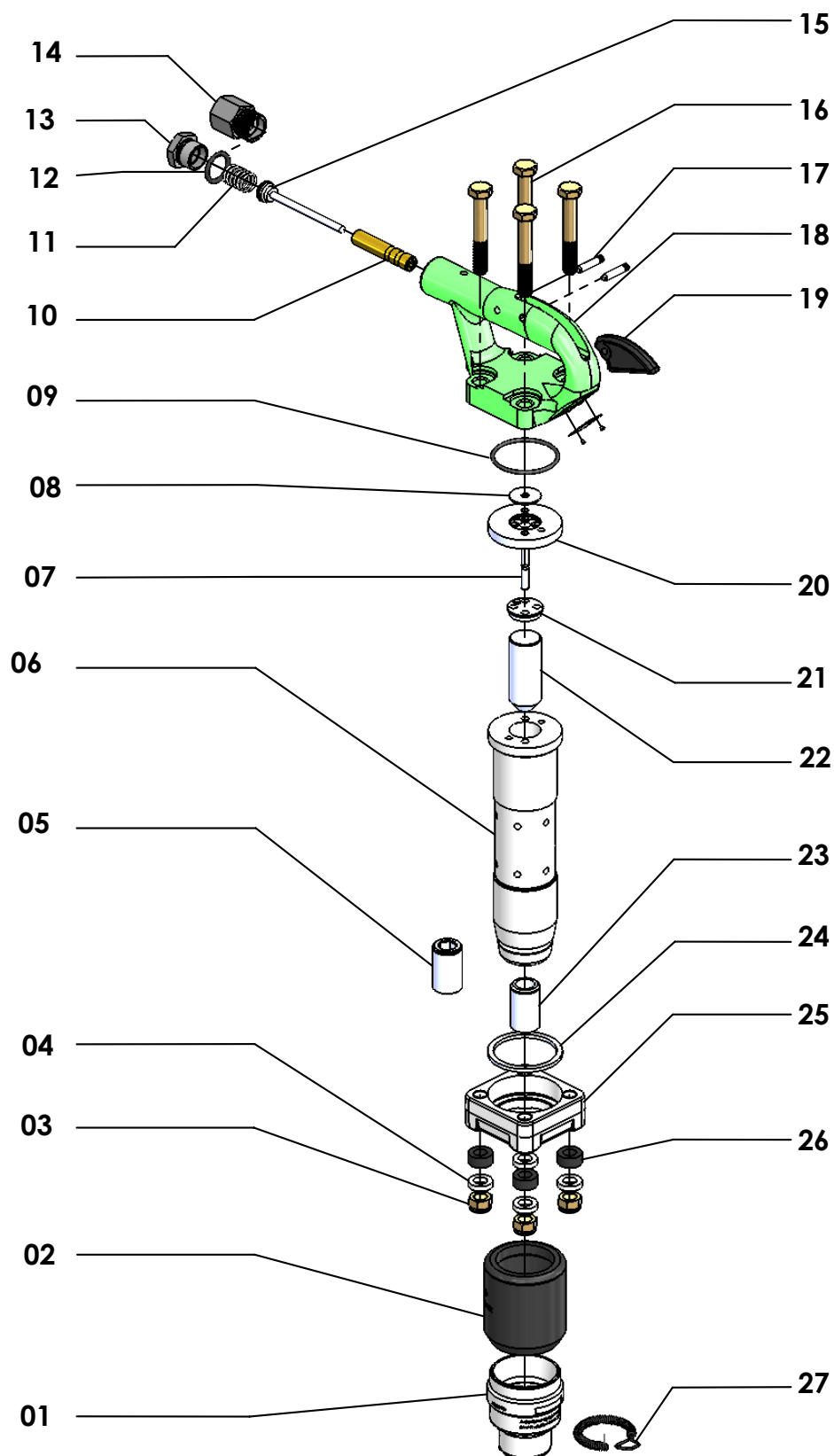
**SERIAL NUMBER LOCATION**

MCH-2RD (68252240-001)  
MCH-2HX (68252243-001)



**MCH-2RD (68252240-001)**  
**MCH-2HX (68252243-001)**

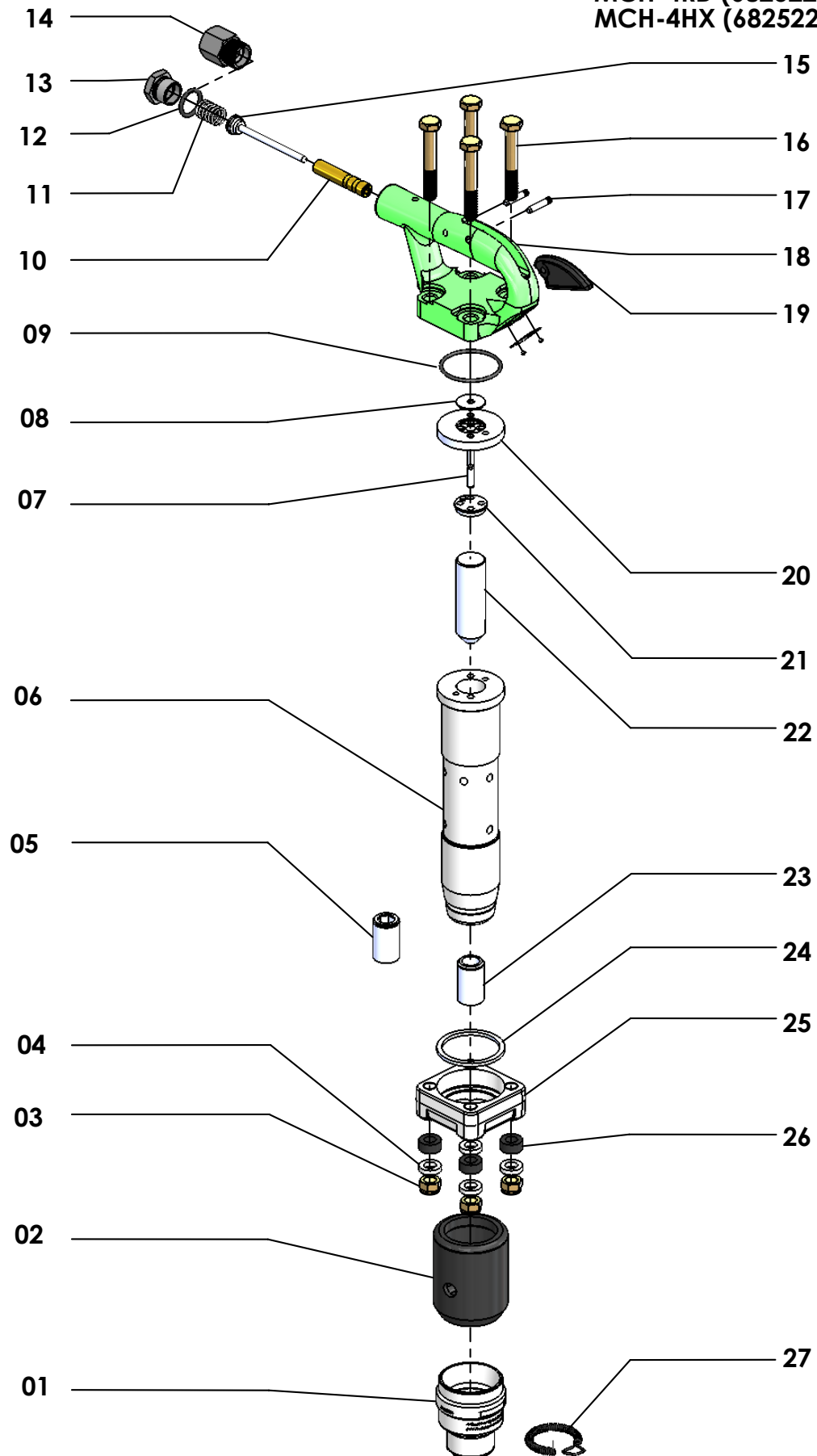
ILLUS NO.	PART NUMBER	DESCRIPTION	QTY.
1	68722235	RETAINER,OVAL COLLAR	1
2	68722451	DEFLECTOR, MCH-2,3	1
3	68 VE 8120	NYLOC NUT, HANDLE BOLT	4
4	68722428	SPACER, HANDLE BOLT (STEEL)	4
5	68722759	BUSHING, 0.580" HEX - USE ON MCH-2HX (68252243-001)	1
6	68722310	CYLINDER-2"	1
7	68524063	DOWEL, PIN	2
8	68722229	VALVE DISC	1
9	68524308	O-RING	1
10	68723119	BUSHING, THROTTLE VALVE	1
11	68722225	SPRING, THROTTLE VALVE	1
12	68 CJ 0018	O-RING	1
13	68722224	BUSHING, AIR INLET 3/8 NPT	1
14	68722274	BUSHING, AIR INLET 7/8-24	1
15	68723118	VALVE, THROTTLE	1
16	68524155	BOLT, HANDLE	4
17	68723013	PIN	2
18	68723115	HANDLE, BARE	1
19	68722228	TRIGGER	1
20	68722230	CHEST, VALVE	1
21	68722231	BUMPER, VALVE CHEST	1
22	68722311	PISTON-2"	1
23	68723240	BUSHING, 0.680" ROUND - USE ON MCH-2RD (68252240-001)	1
24	68723120	RING, ABSORBER	1
25	68722232	FLANGE, CYLINDER	1
26	68722427	SPACER, VIBRATION	4
27	250012-530	SPRING, RETAINER LOCK	1



**MCH-3RD (68252241-001)**  
**MCH-3HX (68252244-001)**

<b>ILLUS NO.</b>	<b>PART NUMBER</b>	<b>DESCRIPTION</b>	<b>QTY.</b>
1	68722235	RETAINER,OVAL COLLAR	1
2	68722451	DEFLECTOR, MCH-2,3	1
3	68 VE 8120	NYLOC NUT, HANDLE BOLT	4
4	68722428	SPACER, HANDLE BOLT (STEEL)	4
5	68722759	BUSHING, 0.580" HEX - USE ON MCH-3HX (68252244-001)	1
6	68722233	CYLINDER-3"	1
7	68524063	DOWEL, PIN	2
8	68722229	VALVE DISC	1
9	68524308	O-RING	1
10	68723119	BUSHING, THROTTLE VALVE	1
11	68722225	SPRING, THROTTLE VALVE	1
12	68 CJ 0018	O-RING	1
13	68722224	BUSHING, AIR INLET 3/8 NPT	1
14	68722274	BUSHING, AIR INLET 7/8-24	1
15	68723118	VALVE, THROTTLE	1
16	68524155	BOLT, HANDLE	4
17	68723013	PIN	2
18	68723115	HANDLE, BARE	1
19	68722228	TRIGGER	1
20	68722230	CHEST, VALVE	1
21	68722231	BUMPER, VALVE CHEST	1
22	68722234	PISTON-3"	1
23	68723240	BUSHING, 0.680" ROUND - USE ON MCH-2HX (68252241-001)	1
24	68723120	RING, ABSORBER	1
25	68722232	FLANGE, CYLINDER	1
26	68722427	SPACER, VIBRATION	4
27	250012-530	SPRING, RETAINER LOCK	1

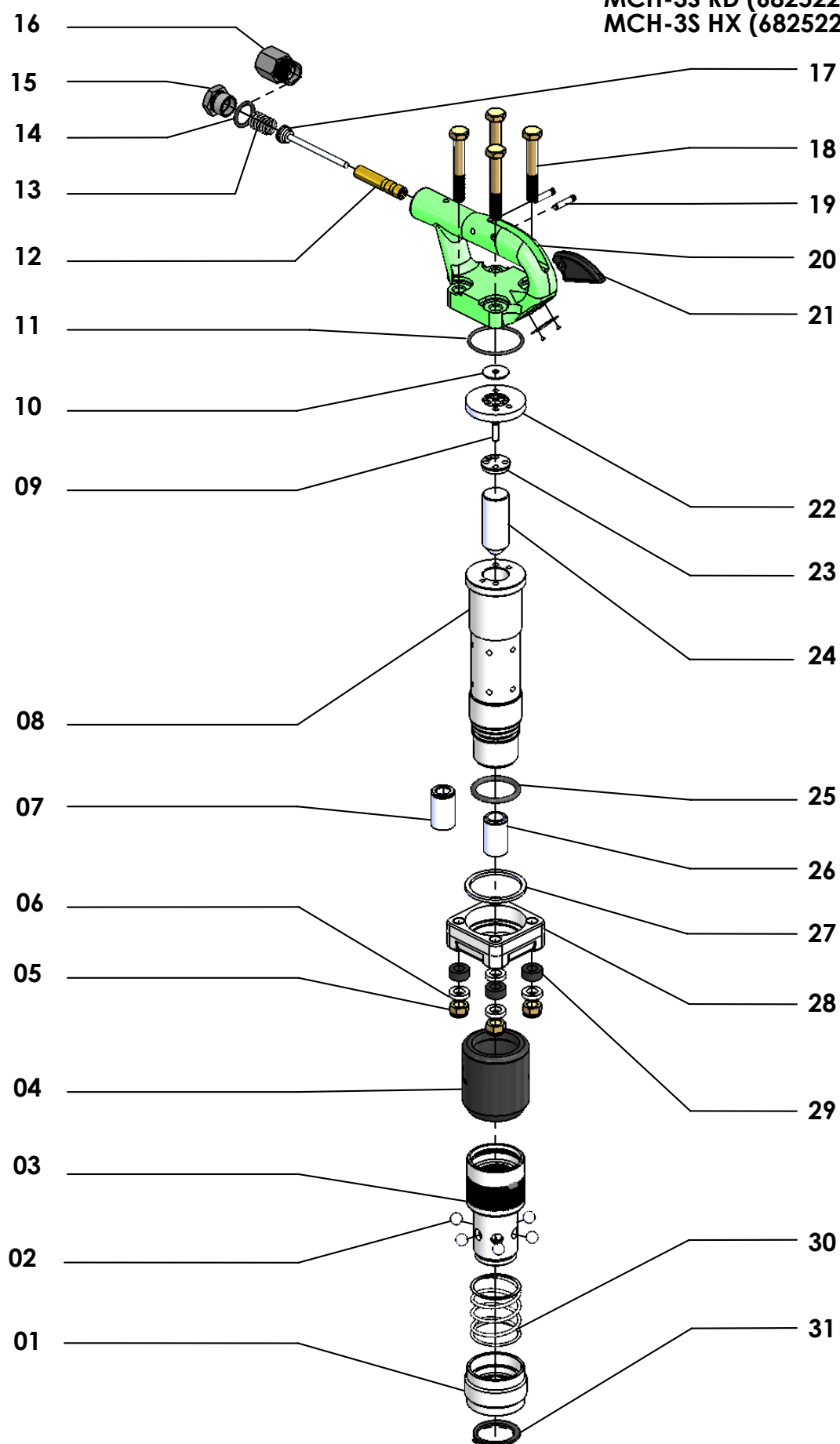
**MCH-4RD (68252242-001)**  
**MCH-4HX (68252245-001)**





**MCH-4RD (68252242-001)**  
**MCH-4HX (68252245-001)**

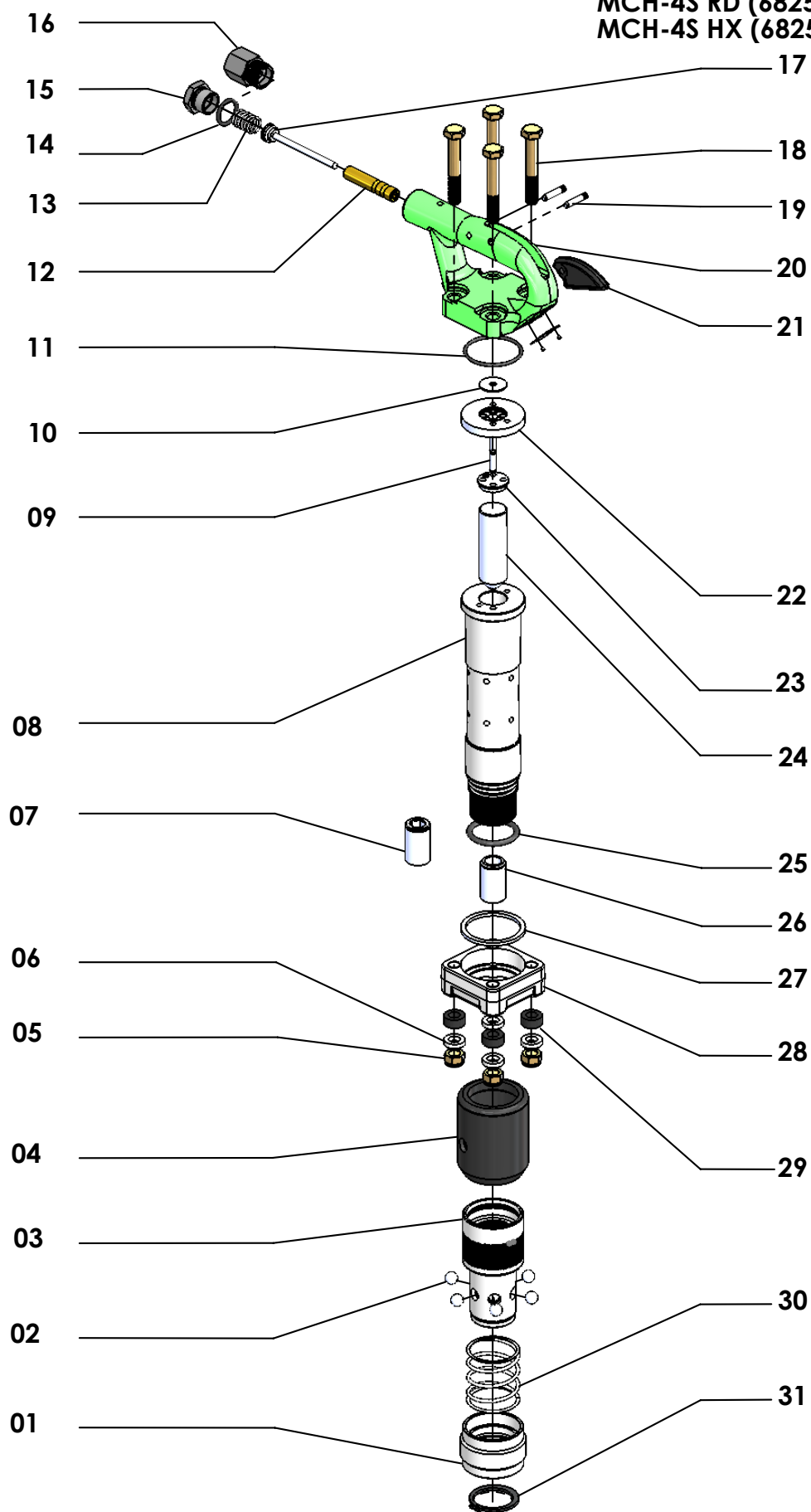
ILLUS NO.	PART NUMBER	DESCRIPTION	QTY.
1	68722235	RETAINER,OVAL COLLAR	1
2	68722452	DEFLECTOR, MCH-4	1
3	68 VE 8120	NYLOC NUT, HANDLE BOLT	4
4	68722428	SPACER, HANDLE BOLT (STEEL)	4
5	68722759	BUSHING, 0.580" HEX - USE ON MCH-4HX (68252245-001)	1
6	68722307	CYLINDER-4"	1
7	68524063	DOWEL, PIN	2
8	68722229	VALVE DISC	1
9	68524308	O-RING	1
10	68723119	BUSHING, THROTTLE VALVE	1
11	68722225	SPRING, THROTTLE VALVE	1
12	68 CJ 0018	O-RING	1
13	68722224	BUSHING, AIR INLET 3/8 NPT	1
14	68722274	BUSHING, AIR INLET 7/8-24	1
15	68723118	VALVE, THROTTLE	1
16	68524155	BOLT, HANDLE	4
17	68723013	PIN	2
18	68723115	HANDLE, BARE	1
19	68722228	TRIGGER	1
20	68722230	CHEST, VALVE	1
21	68722231	BUMPER, VALVE CHEST	1
22	68722308	PISTON-4"	1
23	68723240	BUSHING, 0.680" ROUND - USE ON MCH-4RD (68252242-001)	1
24	68723120	RING, ABSORBER	1
25	68722232	FLANGE, CYLINDER	1
26	68722427	SPACER, VIBRATION	4
27	250012-530	SPRING, RETAINER LOCK	1



**MCH-3S RD (68252247-004)**  
**MCH-3S HX (68252250-004)**

ILLUS NO.	PART NUMBER	DESCRIPTION	QTY.
1	68723229	SLEEVE, RETAINER	1
2	68524725	BALL	6
3	68723228	BODY,RETAINER	1
4	68722451	DEFLECTOR, MCH-2,3	1
5	68 VE 8120	NYLOC NUT, HANDLE BOLT	4
6	68722428	SPACER, HANDLE BOLT (STEEL)	4
7	68722759	BUSHING, 0.580" HEX - USE ON MCH-3HX SS (68252250-004)	1
8	68723232	CYLINDER, MCH-3 SCREW	1
9	68524063	DOWEL, PIN	2
10	68722229	VALVE DISC	1
11	68524308	O-RING	1
12	68723119	BUSHING, THROTTLE VALVE	1
13	68722225	SPRING, THROTTLE VALVE	1
14	68 CJ 0018	O-RING	1
15	68722224	BUSHING, AIR INLET 3/8 NPT	1
16	68722274	BUSHING, AIR INLET 7/8-24	1
17	68723118	VALVE, THROTTLE	1
18	68524155	BOLT, HANDLE	4
19	68723013	PIN	2
20	68723115	HANDLE, BARE	1
21	68722228	TRIGGER	1
22	68722230	CHEST, VALVE	1
23	68722231	BUMPER, VALVE CHEST	1
24	68722234	PISTON-3"	1
25	68 CJ 0030	O-RING	1
26	68723240	BUSHING, 0.680" ROUND - USE ON MCH-3RD SS (68252247-004)	1
27	68723120	RING, ABSORBER	1
28	68722232	FLANGE, CYLINDER	1
29	68722427	SPACER, VIBRATION	4
30	68723237	SPRING, RETAINER	1
31	68524726	RETAINING RING	1

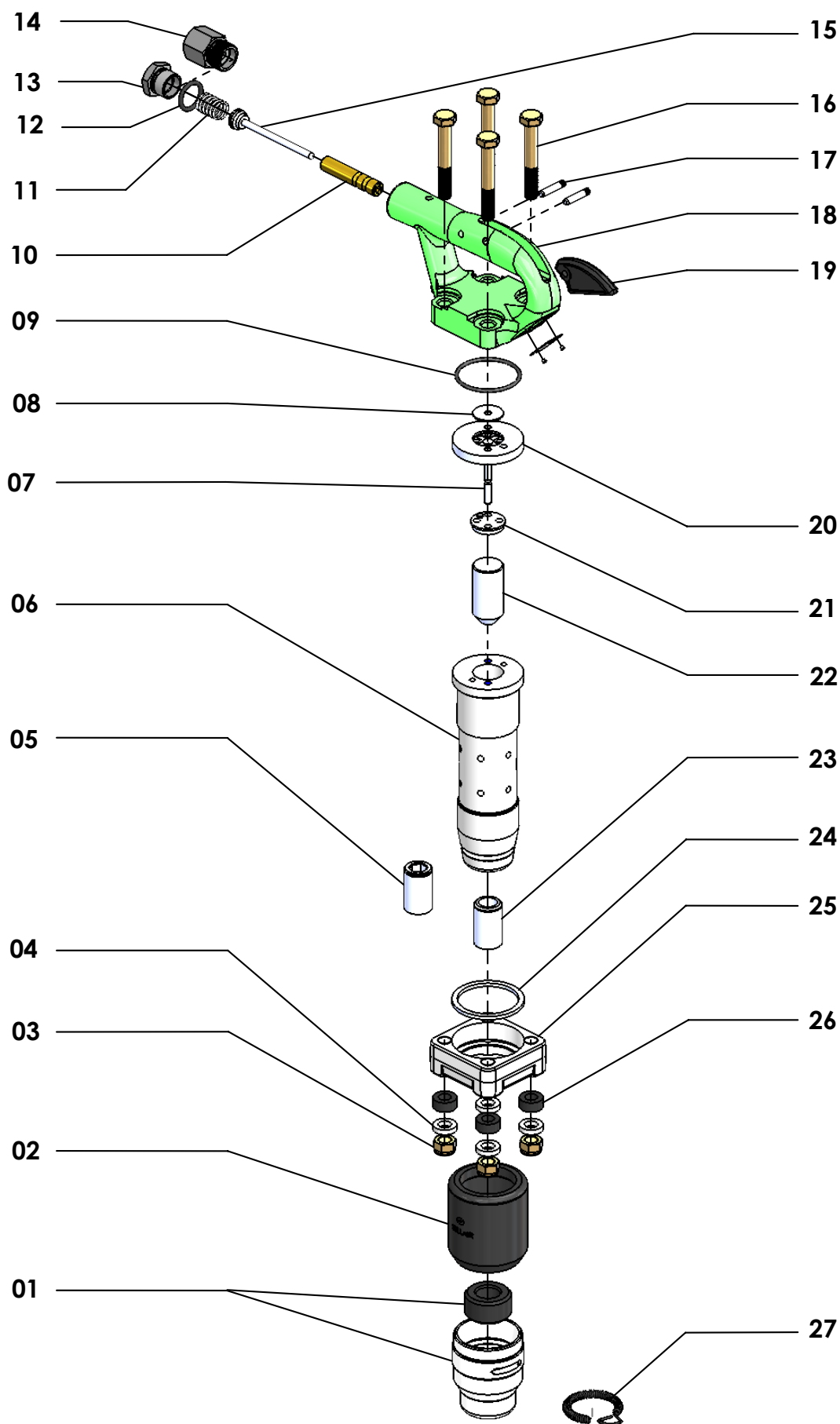
MCH-4S RD (68252248-004)  
MCH-4S HX (68252251-004)



MCH-4S RD (68252248-004)

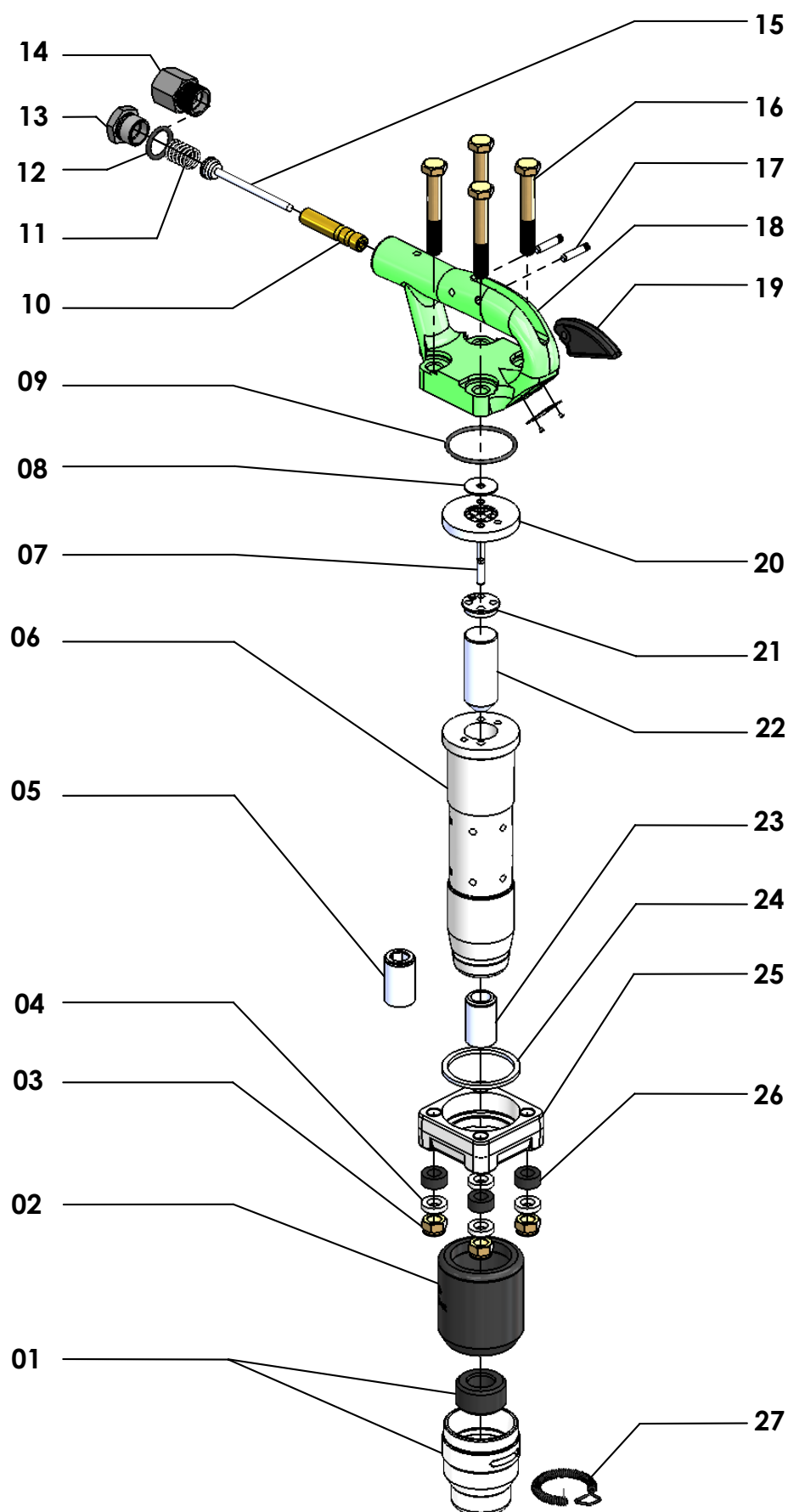
MCH-4S HX (68252251-004)

ILLUS NO.	PART NUMBER	DESCRIPTION	QTY.
1	68723229	SLEEVE, RETAINER	1
2	68524725	BALL	6
3	68723228	BODY, RETAINER	1
4	68722452	DEFLECTOR, MCH-4	1
5	68 VE 8120	NYLOC NUT, HANDLE BOLT	4
6	68722428	SPACER, HANDLE BOLT (STEEL)	4
7	68722759	BUSHING, 0.580" HEX - USE ON MCH-4HX SS (68252251-004)	1
8	68723233	CYLINDER, MCH-4 SCREW	1
9	68524063	DOWEL, PIN	2
10	68722229	VALVE DISC	1
11	68524308	O-RING	1
12	68723119	BUSHING, THROTTLE VALVE	1
13	68722225	SPRING, THROTTLE VALVE	1
14	68 CJ 0018	O-RING	1
15	68722224	BUSHING, AIR INLET 3/8 NPT	1
16	68722274	BUSHING, AIR INLET 7/8-24	1
17	68723118	VALVE, THROTTLE	1
18	68524155	BOLT, HANDLE	4
19	68723013	PIN	2
20	68723115	HANDLE, BARE	1
21	68722228	TRIGGER	1
22	68722230	CHEST, VALVE	1
23	68722231	BUMPER, VALVE CHEST	1
24	68722308	PISTON-4"	1
25	68 CJ 0030	O-RING	1
26	68723240	BUSHING, 0.680" ROUND - USE ON MCH-4RD SS (68252248-004)	1
27	68723120	RING, ABSORBER	1
28	68722232	FLANGE, CYLINDER	1
29	68722427	SPACER, VIBRATION	4
30	68723237	SPRING, RETAINER	1
31	68524726	RETAINING RING	1



**MCH-2RD/RD (68252240-002)**  
**MCH-2HX/RD (68252243-002)**

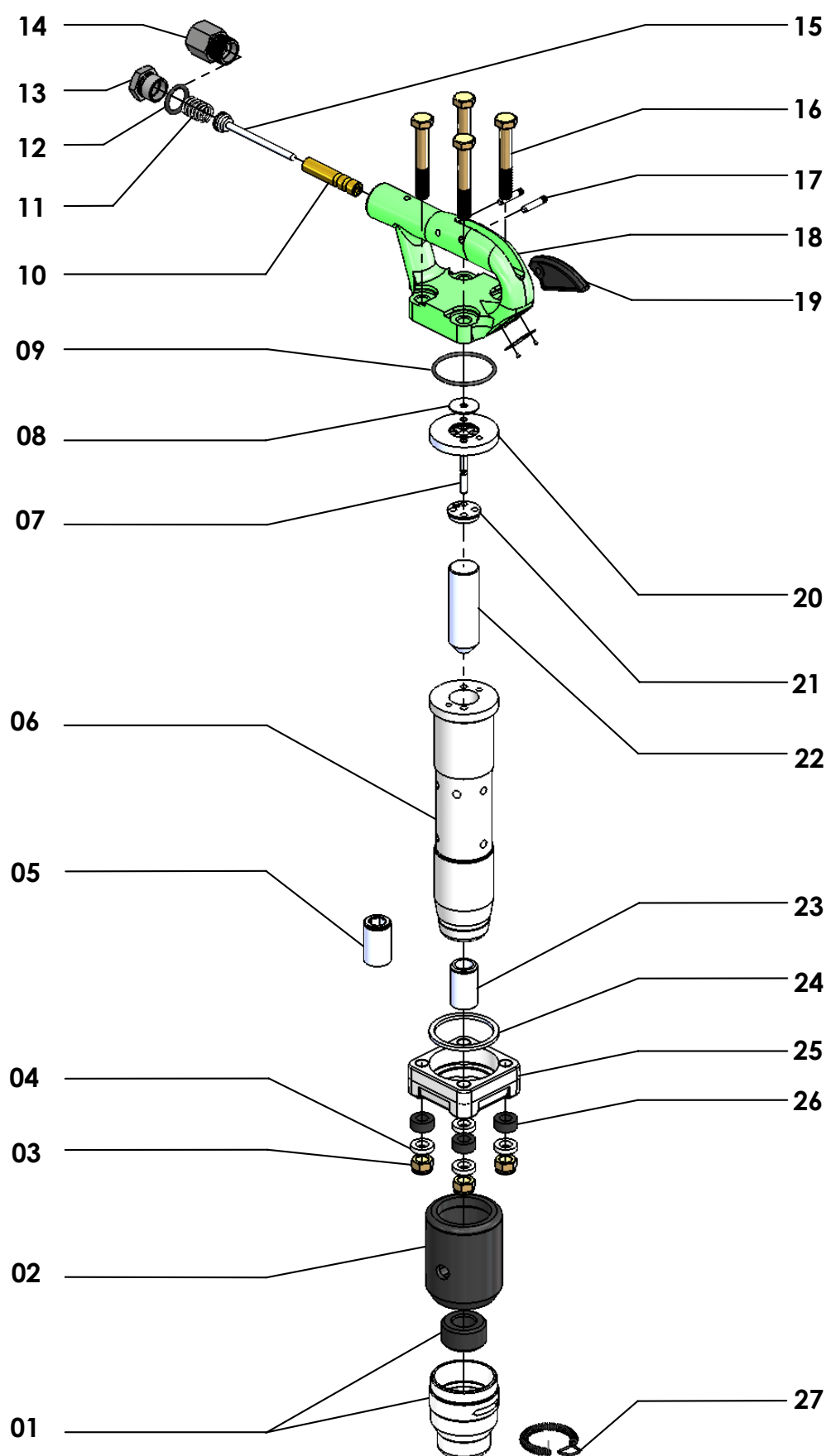
<b>ILLUS NO.</b>	<b>PART NUMBER</b>	<b>DESCRIPTION</b>	<b>QTY.</b>
1	250012-526	MCH RETAINER TAPERED WITH BUMPER (FOR RD COLLARED STEELS)	1
2	68722451	DEFLECTOR, MCH-2,3	1
3	68 VE 8120	NYLOC NUT, HANDLE BOLT	4
4	68722428	SPACER, HANDLE BOLT (STEEL)	4
5	68722759	BUSHING, 0.580" HEX - USE ON MCH-2HX/RD (68252243-002)	1
6	68722310	CYLINDER-2"	1
7	68524063	DOWEL, PIN	2
8	68722229	VALVE DISC	1
9	68524308	O-RING	1
10	68723119	BUSHING, THROTTLE VALVE	1
11	68722225	SPRING, THROTTLE VALVE	1
12	68 CJ 0018	O-RING	1
13	68722224	BUSHING, AIR INLET 3/8 NPT	1
14	68722274	BUSHING, AIR INLET 7/8-24	1
15	68723118	VALVE, THROTTLE	1
16	68524155	BOLT, HANDLE	4
17	68723013	PIN	2
18	68723115	HANDLE, BARE	1
19	68722228	TRIGGER	1
20	68722230	CHEST, VALVE	1
21	68722231	BUMPER, VALVE CHEST	1
22	68722311	PISTON-2"	1
23	68723240	BUSHING, 0.680" ROUND - USE ON MCH-2RD/RD (68252240-002)	1
24	68723120	RING, ABSORBER	1
25	68722232	FLANGE, CYLINDER	1
26	68722427	SPACER, VIBRATION	4
27	250012-530	SPRING, RETAINER LOCK	1





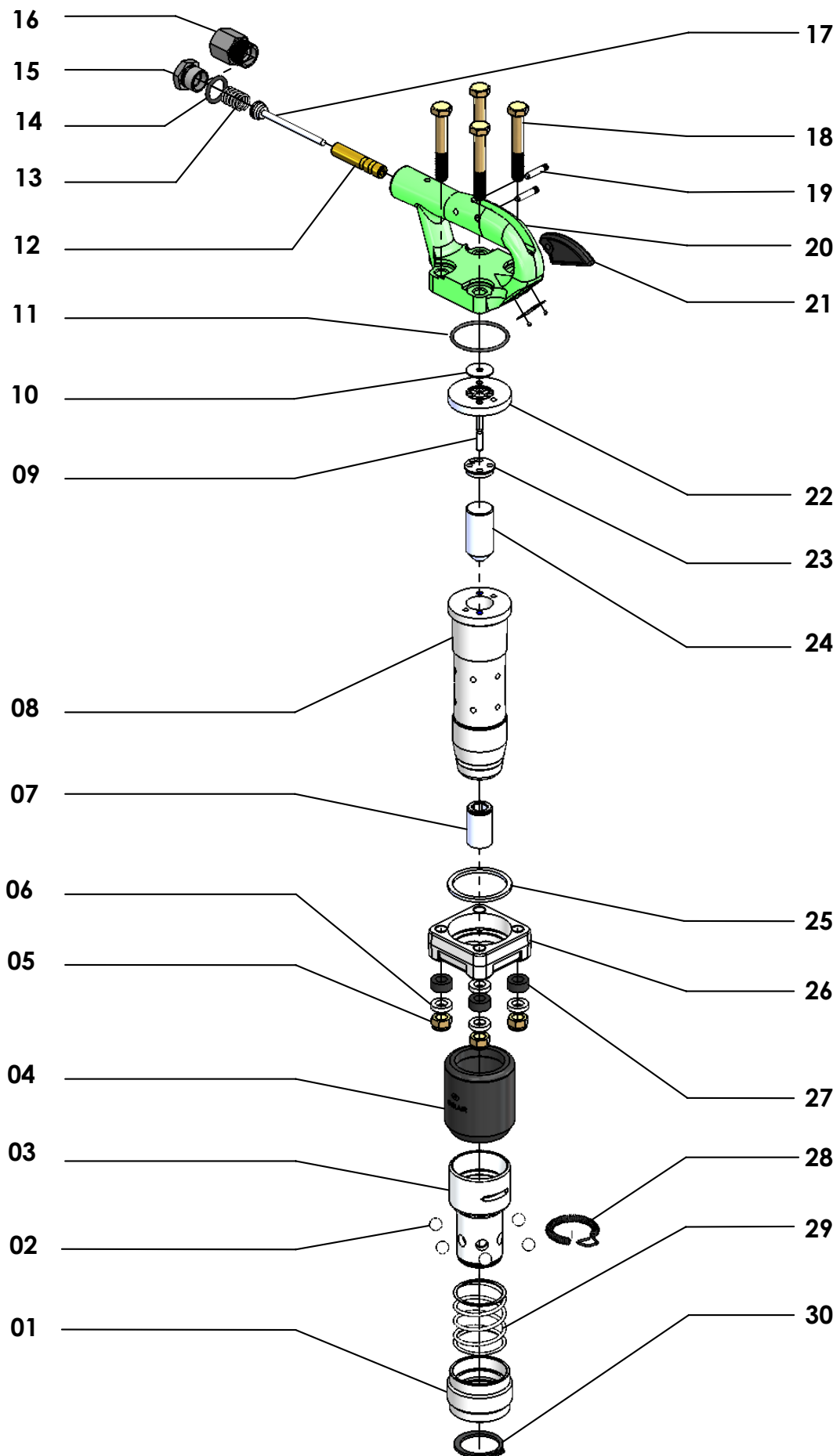
**MCH-3RD/RD (68252241-002)**  
**MCH-3HX/RD (68252244-002)**

ILLUS NO.	PART NUMBER	DESCRIPTION	QTY.
1	250012-526	MCH RETAINER TAPERED WITH BUMPER (FOR RD COLLARED STEELS)	1
2	68722451	DEFLECTOR, MCH-2,3	1
3	68 VE 8120	NYLOC NUT, HANDLE BOLT	4
4	68722428	SPACER, HANDLE BOLT (STEEL)	4
5	68722759	BUSHING, 0.580" HEX - USE ON MCH-3HX/RD (68252244-002)	1
6	68722233	CYLINDER-3"	1
7	68524063	DOWEL, PIN	2
8	68722229	VALVE DISC	1
9	68524308	O-RING	1
10	68723119	BUSHING, THROTTLE VALVE	1
11	68722225	SPRING, THROTTLE VALVE	1
12	68 CJ 0018	O-RING	1
13	68722224	BUSHING, AIR INLET 3/8 NPT	1
14	68722274	BUSHING, AIR INLET 7/8-24	1
15	68723118	VALVE, THROTTLE	1
16	68524155	BOLT, HANDLE	4
17	68723013	PIN	2
18	68723115	HANDLE, BARE	1
19	68722228	TRIGGER	1
20	68722230	CHEST, VALVE	1
21	68722231	BUMPER, VALVE CHEST	1
22	68722234	PISTON-3"	1
23	68723240	BUSHING, 0.680" ROUND - USE ON MCH-3RD/RD (68252241-002)	1
24	68723120	RING, ABSORBER	1
25	68722232	FLANGE, CYLINDER	1
26	68722427	SPACER, VIBRATION	4
27	250012-530	SPRING, RETAINER LOCK	1



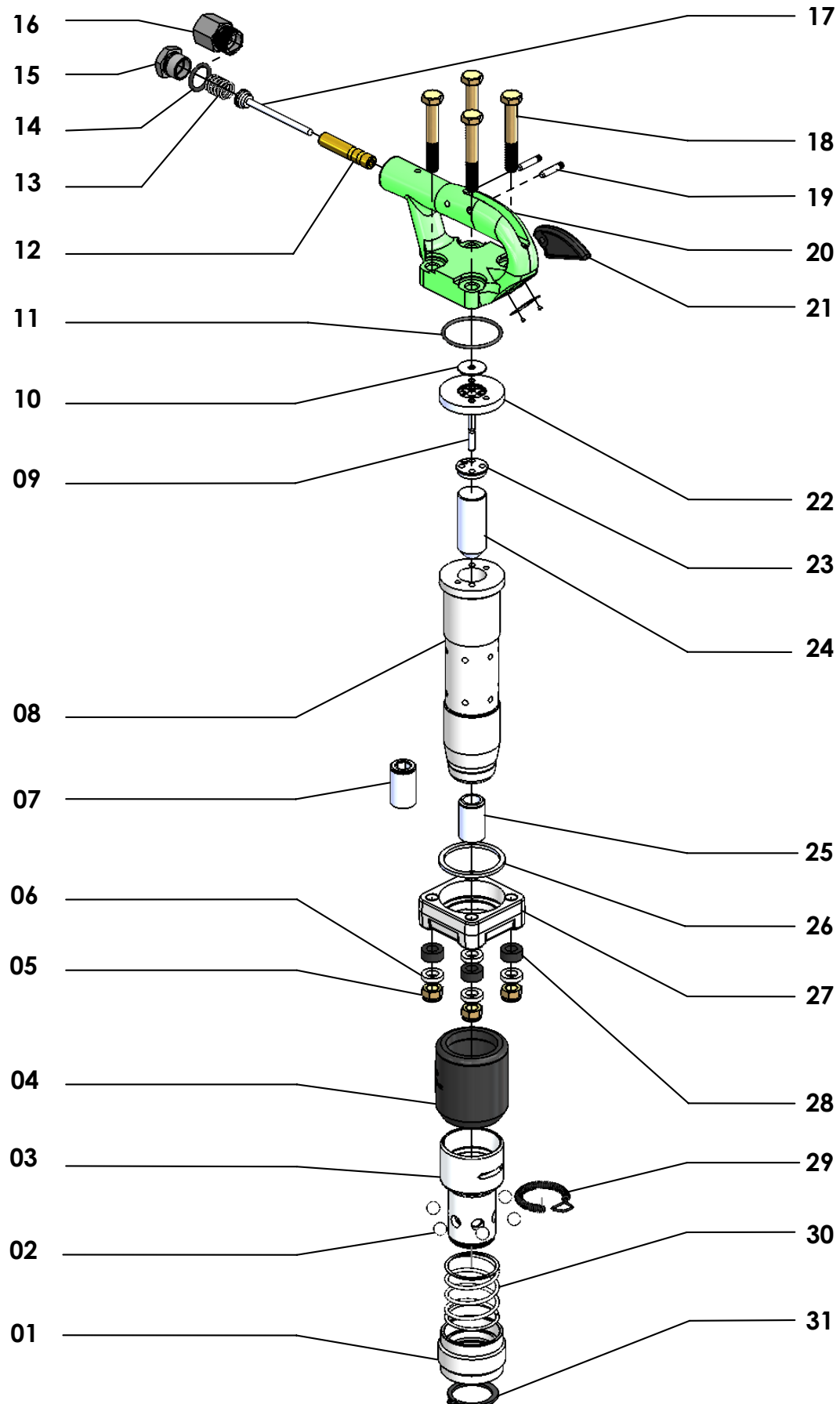
**MCH-4RD/RD (68252242-002)**  
**MCH-4HX/RD (68252245-002)**

<b>ILLUS NO.</b>	<b>PART NUMBER</b>	<b>DESCRIPTION</b>	<b>QTY.</b>
1	250012-526	MCH RETAINER TAPERED WITH BUMPER (FOR RD COLLARED STEELS)	1
2	68722452	DEFLECTOR, MCH-4	1
3	68 VE 8120	NYLOC NUT, HANDLE BOLT	4
4	68722428	SPACER, HANDLE BOLT (STEEL)	4
5	68722759	BUSHING, 0.580" HEX - USE ON MCH-4HX/RD (68252245-002)	1
6	68722307	CYLINDER-4"	1
7	68524063	DOWEL, PIN	2
8	68722229	VALVE DISC	1
9	68524308	O-RING	1
10	68723119	BUSHING, THROTTLE VALVE	1
11	68722225	SPRING, THROTTLE VALVE	1
12	68 CJ 0018	O-RING	1
13	68722224	BUSHING, AIR INLET 3/8 NPT	1
14	68722274	BUSHING, AIR INLET 7/8-24	1
15	68723118	VALVE, THROTTLE	1
16	68524155	BOLT, HANDLE	4
17	68723013	PIN	2
18	68723115	HANDLE, BARE	1
19	68722228	TRIGGER	1
20	68722230	CHEST, VALVE	1
21	68722231	BUMPER, VALVE CHEST	1
22	68722308	PISTON-4"	1
23	68723240	BUSHING, 0.680" ROUND - USE ON MCH-4RD/RD (68252242-002)	1
24	68723120	RING, ABSORBER	1
25	68722232	FLANGE, CYLINDER	1
26	68722427	SPACER, VIBRATION	4
27	250012-530	SPRING, RETAINER LOCK	1



## MCH-2HX/BALL (68252243-004)

ILLUS NO.	PART NUMBER	DESCRIPTION	QTY.
1	68723229	SLEEVE, RETAINER	1
2	68524725	BALL	6
3	250021-223	MCH RETAINER (TAPERED) BODY	1
4	68722451	DEFLECTOR, MCH-2,3	1
5	68 VE 8120	NYLOC NUT, HANDLE BOLT	4
6	68722428	SPACER, HANDLE BOLT (STEEL)	4
7	68722759	BUSHING, 0.580" HEX - USE ON MCH-2HX/BALL (68252243-004)	1
8	68722310	CYLINDER-2"	1
9	68524063	DOWEL, PIN	2
10	68722229	VALVE DISC	1
11	68524308	O-RING	1
12	68723119	BUSHING, THROTTLE VALVE	1
13	68722225	SPRING, THROTTLE VALVE	1
14	68 CJ 0018	O-RING	1
15	68722224	BUSHING, AIR INLET 3/8 NPT	1
16	68722274	BUSHING, AIR INLET 7/8-24	1
17	68723118	VALVE, THROTTLE	1
18	68524155	BOLT, HANDLE	4
19	68723013	PIN	2
20	68723115	HANDLE, BARE	1
21	68722228	TRIGGER	1
22	68722230	CHEST, VALVE	1
23	68722231	BUMPER, VALVE CHEST	1
24	68722311	PISTON-2"	1
25	68723120	RING, ABSORBER	1
26	68722232	FLANGE, CYLINDER	1
27	68722427	SPACER, VIBRATION	4
28	250012-530	SPRING, RETAINER LOCK	1
29	68723237	SPRING, RETAINER	1
30	68524726	RETAINING RING	1

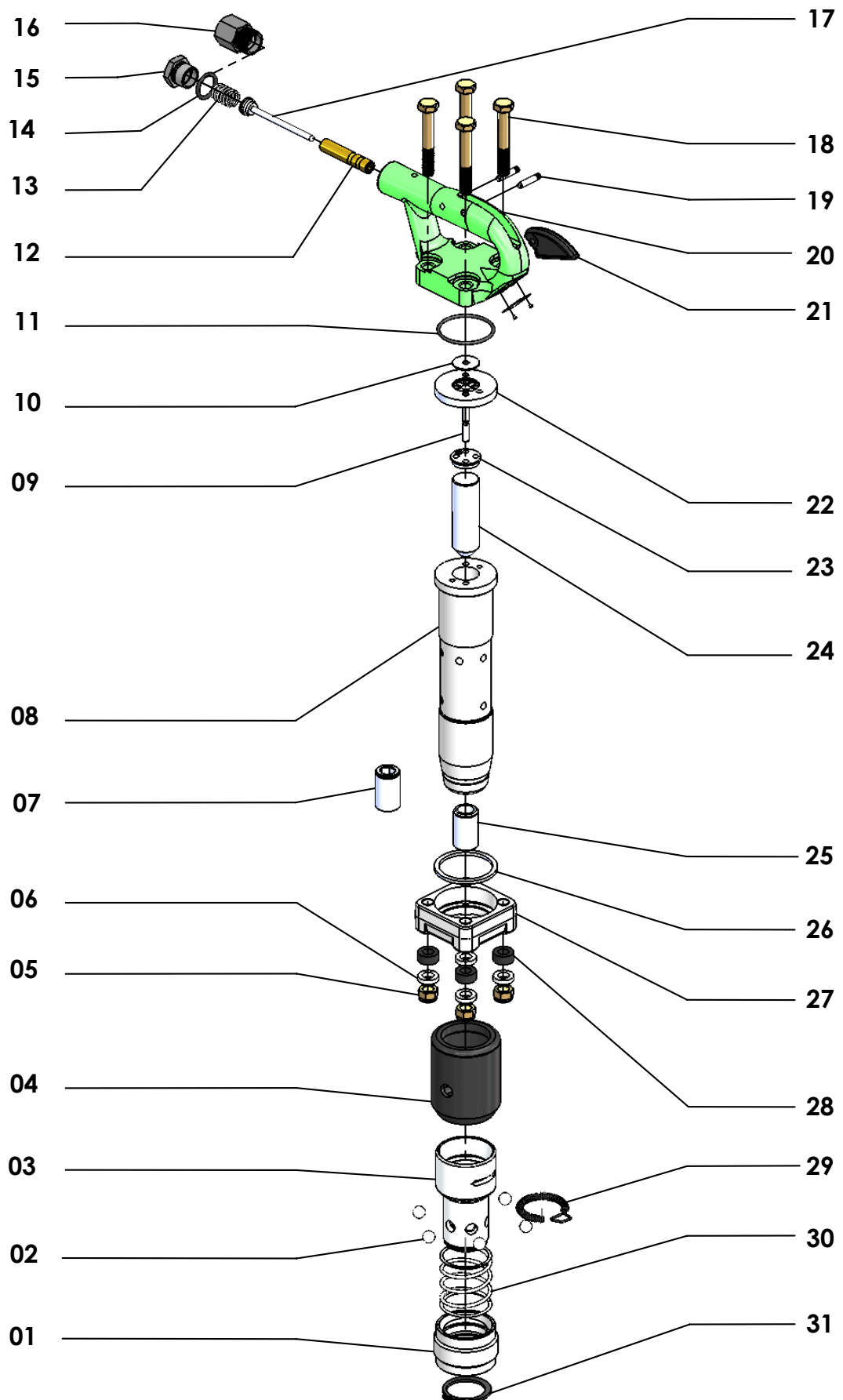


**MCH-3RD/BALL (68252241-004)**  
**MCH-3HX/BALL (68252244-004)**

ILLUS NO.	PART NUMBER	DESCRIPTION	QTY.
1	68723229	SLEEVE, RETAINER	1
2	68524725	BALL	6
3	250021-223	MCH RETAINER (TAPERED) BODY	1
4	68722451	DEFLECTOR, MCH-2,3	1
5	68 VE 8120	NYLOC NUT, HANDLE BOLT	4
6	68722428	SPACER, HANDLE BOLT (STEEL)	4
7	68722759	BUSHING, 0.580" HEX - USE ON MCH-3HX/BALL (68252244-004)	1
8	68722233	CYLINDER-3"	1
9	68524063	DOWEL, PIN	2
10	68722229	VALVE DISC	1
11	68524308	O-RING	1
12	68723119	BUSHING, THROTTLE VALVE	1
13	68722225	SPRING, THROTTLE VALVE	1
14	68 CJ 0018	O-RING	1
15	68722224	BUSHING, AIR INLET 3/8 NPT	1
16	68722274	BUSHING, AIR INLET 7/8-24	1
17	68723118	VALVE, THROTTLE	1
18	68524155	BOLT, HANDLE	4
19	68723013	PIN	2
20	68723115	HANDLE, BARE	1
21	68722228	TRIGGER	1
22	68722230	CHEST, VALVE	1
23	68722231	BUMPER, VALVE CHEST	1
24	68722234	PISTON-3"	1
25	68723240	BUSHING, 0.680" ROUND - USE ON MCH-3RD/BALL (68252241-004)	1
26	68723120	RING, ABSORBER	1
27	68722232	FLANGE, CYLINDER	1
28	68722427	SPACER, VIBRATION	4
29	250012-530	SPRING, RETAINER LOCK	1
30	68723237	SPRING, RETAINER	1
31	68524726	RETAINING RING	1

# MCH-4/BALL

MCH-4RD/BALL (68252242-004)  
MCH-4HX/BALL (68252245-004)





**MCH-4RD/BALL (68252242-004)**  
**MCH-4HX/BALL (68252245-004)**

ILLUS NO.	PART NUMBER	DESCRIPTION	QTY.
1	68723229	SLEEVE, RETAINER	1
2	68524725	BALL	6
3	250021-223	MCH RETAINER (TAPERED) BODY	1
4	68722452	DEFLECTOR, MCH-4	1
5	68 VE 8120	NYLOC NUT, HANDLE BOLT	4
6	68722428	SPACER, HANDLE BOLT (STEEL)	4
7	68722759	BUSHING, 0.580" HEX - USE ON MCH-4HX/BALL (68252245-004)	1
8	68722307	CYLINDER-4"	1
9	68524063	DOWEL, PIN	2
10	68722229	VALVE DISC	1
11	68524308	O-RING	1
12	68723119	BUSHING, THROTTLE VALVE	1
13	68722225	SPRING, THROTTLE VALVE	1
14	68 CJ 0018	O-RING	1
15	68722224	BUSHING, AIR INLET 3/8 NPT	1
16	68722274	BUSHING, AIR INLET 7/8-24	1
17	68723118	VALVE, THROTTLE	1
18	68524155	BOLT, HANDLE	4
19	68723013	PIN	2
20	68723115	HANDLE, BARE	1
21	68722228	TRIGGER	1
22	68722230	CHEST, VALVE	1
23	68722231	BUMPER, VALVE CHEST	1
24	68722308	PISTON-4"	1
25	68723240	BUSHING, 0.680" ROUND - USE ON MCH-4RD/BALL (68252242-004)	1
26	68723120	RING, ABSORBER	1
27	68722232	FLANGE, CYLINDER	1
28	68722427	SPACER, VIBRATION	4
29	250012-530	SPRING, RETAINER LOCK	1
30	68723237	SPRING, RETAINER	1
31	68524726	RETAINING RING	1

## Warranty Policy Tools

**WARRANTY PERIOD COMMENCES AT START-UP, INVOICE DATE, OR BEGINS THIRTY (30) DAYS AFTER DATE OF SHIPMENT FROM FACTORY, BUT NOT LATER THAN 12 MONTHS FROM DATE OF SHIPMENT FROM FACTORY.**

A Sullair Air Tool, if used in accordance with manufacturer's instructions, is warranted against defects in materials and workmanship. M Series tools are also warranted against loss of performance due to wear. This warranty does not apply to any tool damaged by accident, misuse or negligence. The warranty shall continue for the periods of time as set forth below.

PRODUCT	WARRANTY PERIOD
MPB Series Paving Breakers	2 YEARS
MCD-30 Clay Digger, MDT-22 Demolition Tool	2 YEARS
MDT-30 Demolition Tool	1 YEARS
MBT-6 Tamper	1 YEAR
MCH Series Chipping Hammer:	
-Handle and Cylinder	2 YEARS
-Internal Parts, Excluding Retainer and Retainer Spring	1 YEAR
MRD Series Rock Drills and Utility Drill	1 YEAR
MRD-55 Heavy Duty Rock Drill	90 Days
MCV Series	6 Months
All Tools other than M Series	90 days

The warranty extends only to the Sullair Air Tool and is limited to the repair or replacement, as Sullair may elect, of any defective parts. Installation and transportation costs are not included. Sullair Corporation shall have the option of requiring the return to it of the defective tool or part transportation prepaid, for inspection.

**THIS STATEMENT OF WARRANTY IS EXPRESSLY IN LIEU OF AND DISCLAIMS ALL OTHER EXPRESS WARRANTIES, IMPLIED WARRANTIES OF MERCHANTABILITY OR FITNESS FOR A PARTICULAR PURPOSE, AND ALL OTHER IMPLIED WARRANTIES. THERE ARE NO WARRANTIES WHICH EXTEND BEYOND THE DESCRIPTION ON THE FACE HEREOF. THIS WARRANTY DOES NOT INCLUDE LIABILITY FOR INCIDENTAL OR CONSEQUENTIAL DAMAGES.**

All claims under this warranty should be made by contacting your local Sullair Representative.

 **SULLAIR<sup>®</sup> CORPORATION**  
MICHIGAN CITY, INDIANA 46360 U.S.A.











© Copyright 2015 Sullair. All rights reserved.  
The color green is a registered trademark of Sullair.  
Specifications subject to change without notice.